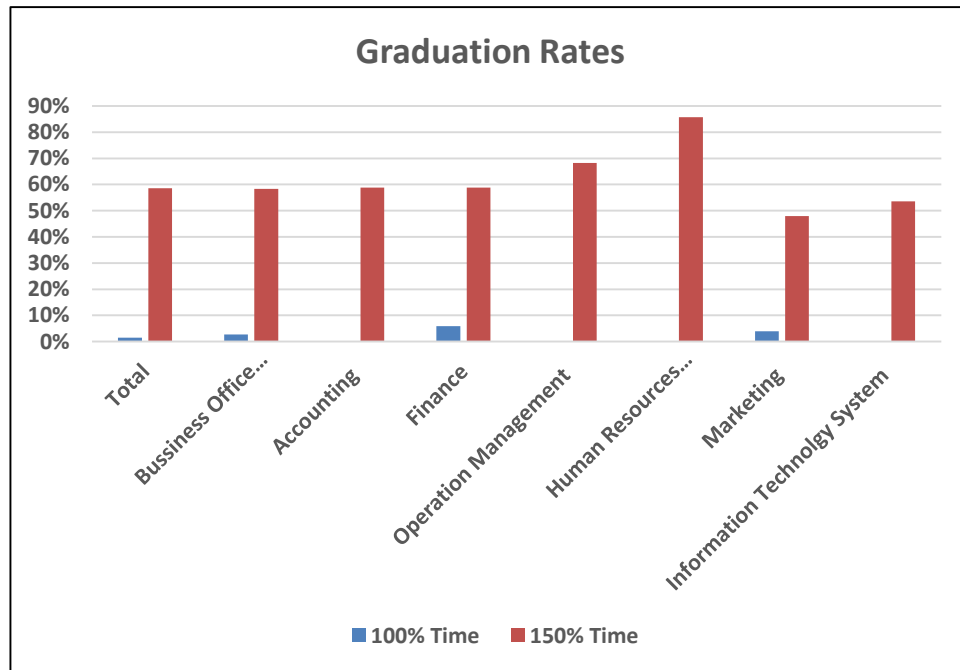


# Graduation Rates

As gathered by the Office of Planning, Research and Institutional Improvement (OPIMI by its Spanish acronyms)



	100%/ Time	150% /Time
Total	1.5%	58.6%
Bussiness Office Administration (BOA)	2.8%	58.3%
Accounting	0.0%	58.8%
Finance	5.9%	58.8%
Operation Management	0.0%	68.2%
Human Resources Management	0.0%	85.7%
Marketing	4.0%	48.0%
Information Technology System	0.0%	53.6%

What the College of Business Administration is doing:

- An assertive campaign encouraging more students to seek academic counseling.
- Promote students participation in professional and academic associations, and extracurricular activities.